

1. Modified Tree identify (submitted by Takayuki Nyu)

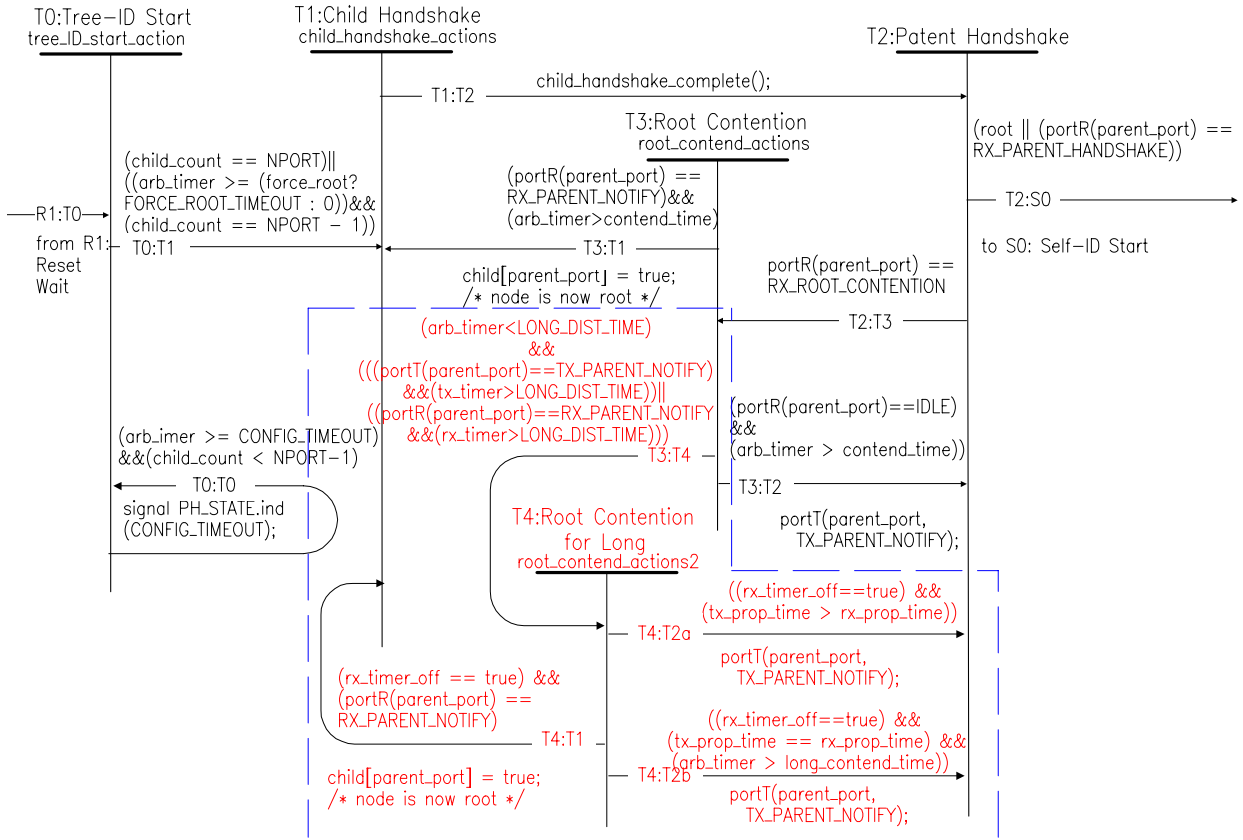
1. Additional PHY timing constants

Timing constant	Minimum	Maximum	Comment
LONG_DIST_TIME		0.15 μ s	Transition timing from the traditional re-resolution method of root contention to the another method for long distance
BACK_OFF_TIME	0.04 μ s		Time to wait in state T4 before transition to state T2

2. Cable PHY code definition

```
timer tx_timer; // timer for measurement the duration of tx_parent_notify
timer rx_timer; // timer for measurement the duration of rx_parent_notify
int tx_prop_timer; // the duration of tx_parent_notify
int rx_prop_timer // the duration of rx_parent_notify
boolean rx_timer_off // set when reception of rx_parent_notify is complete
baserate_time long_contend_time // amount of time to wait for re-start tx_parent_notify
```

3. Tree-ID state machine



F

figure 1 : Modified Tree-ID state machine

The parts enclosed by blue dashed lines is added.

1. Tree-ID state machine notes

State T4 : Root Contention for long cable. At this point, both nodes compare the duration of tx_parent_notify and the duration of rx_parent_notify. If the duration of tx_parent_notify is longer than the duration of rx_parent_notify, the node will be child node. If the duration of rx_parent_notify is longer than the duration of tx_parent_notify, the node will be parent node, that is, root.

Transition T3 : T4. When tx_timer or rx_timer is more than LONG_DIST_TIME, the resolution method for long cable is applied.

Transition T4 : T1. If the duration of rx_parent_notify is longer than the duration of tx_parent_notify and the node receives the rx_parent_notify, the node take on the role of bus root.

Transition T4 : T2a. If the duration of tx_parent_notify is longer than the duration of rx_parent_notify, the node once again sends the tx_parent_notify signal.

Transition T4 : T2b. If the duration of tx_parent_notify is equal to the duration of rx_parent_notify, the nodes wait for long_contend_time in state T4, then once again send the tx_parent_notify signal.

2.Tree-ID actions and conditions

Table 1 : modified IEEE 1394-1995 Table 4-45

```

void tree_ID_start_actions() {
int i, temp_count;
arb_timer = 0;           // start timer
while(true) {           // loop forever
    temp_count = 0;      // temporary child counter
    for (i = 0; i < NPORT; i++)
        if (connected[i] || portR(i) == RX_PARENT_NOTIFY) {
            // when unconnected or receiving "you are my
parent"
            child[i] = true;    // set child flag
            temp_count++;      // and increment counter
            child_count = temp_count;    // set current child count
        }
        // end of forever loop
}
void child_handshake_actions() {
int i;
root = true;           // root will stay true if all ports are child ports
for (i = 0; i < NPORT; i++) {
    if (connected[i] && child[i])
        portT(i, TX_CHILD_NOTIFY); // you are my child
    else if (connected[i]) {
        portT(i, TX_PARENT_NOTIFY); // you are my parent
        parent_port = i;           // there is at most one port with child==false
        root = false;             // cannot be root since there is a parent
        tx_timer=0; // start transmission timer
    }
}
boolean child_handshake_complete() { // true id all active children in "Start Self_ID"
int i;
for (i = 0; i < NPORT; i++)
    if (child[i] && connected[i] && (portR(i) != RX_CHILD_HANDSHAKE)

```

```

    return false;          // active child not giving "you are my parent"
return true;              // will also be true if there are no active
children
}
void root_contend_actions() {
int i;
contend_time = (random_bool() ? CONTEND_SLOW : CONTEND_FAST);
tx_prop_time = tx_timer; // set transmission time
for (i = 0; i < NPORT; i++) {
    if (child[i])
        portT(i, TX_CHILD_NOTIFY); // you are my child
    else
        portT(i, IDLE);           // abandon "you are my parent" request
}
arb_timer = 0;              // start arbitration timer
rx_timer = 0; // start reception timer
}

void root_contend_actions2( ) {
long_contend_time = ( random_bool( ) ? 0 : BACK_OFF_TIME );
while ( portR(parent_port) == RX_PARENT_NOTIFY ) {
    rx_timer_off = false;
}
if ( portR(parent_port) == IDLE ) {
    rx_timer_off = true;
    rx_prop_time = rx_timer;
    arb_timer = 0; // start arbitration timer
}
}

```

Example : The distance between nodes is 50m

